

SUNSEEKER MOTORYACHTS | 28 METRE YACHT





# CONTENTS

SUNSEEKER 28 METRE YACHT

- 1 Contents
- 3 Introducing the 28 Metre Yacht
- 7 Interiors
- 12 Profile general arrangement
- 14 Flybridge general arrangement
- 16 Main deck general arrangement
- 18 Lower deck general arrangement
- 20 Principal characteristics
- 21 Principal features
- 22 Standard specification

SEPTEMBER 2011







# INTRODUCING

SUNSEEKER 28 METRE YACHT

The first of a distinctive new generation and manifestly different, the 28 Metre Yacht has created such excitement since first mooted that, unprecedented in this size band, a number of boats have sold off plan before the January 2012 launch.

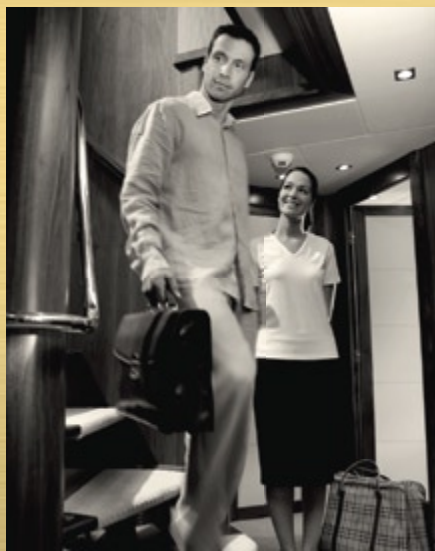
This new design incorporates more aspects of the bigger boats, a higher flared bow and high sided hull topped by bulwarks as examples. But the element most captivating is the remarkable extent of main deck glazing. Unusually full height and pillarless, this flows continuously down the sides and right around the rear of the saloon, merging with the slide-opening doors, giving the main deck accommodation a unique total transparency for absolutely uninterrupted floor to ceiling panoramic views and an extraordinarily bright interior.

Just as this increases usability of the saloon through the day, particularly with the option also of side doors and bulwark balcony, other external social areas on the foredeck and flybridge have also been innovated with new sunpad and group seating formats, and on the now lengthened upper deck a wider scope of furnishing options for everything from spa pools and seated bars and BBQs.









# INTERIORS

SUNSEEKER 28 METRE YACHT

Bespoke to owner specification and with a range of cabin plans, the 28 Metre Yacht's saloon and dining area will inevitably play a pivotal role with panoramic outlook and two stairways leading down to the VIP suite forward and amidships a full beam master stateroom with either two twin guest cabins aft or the option of converting the port twin into a third VIP suite all with big, big windows.

In Sunseeker tradition great attention has been paid to noise and vibration control which includes en suite bathrooms between sleeping and machinery space. Access to the crew quarters for up to four, with own mess area and access to engine room, is via a transom doorway.

Throughout, headroom and hull-side storage is more plentiful than on most craft this size, courtesy of the lower chine and increased volume of the new hull type which is so hydrodynamically advanced it calls for just 12 rather than 16-cylinder engines to power this yacht to an impressive 29 knots.

This reduction in engine size is just one part of the greening programme for the 28 Metre Yacht which also includes low maintenance teak-styled composite decking, innovation in the waste and power management systems and LED lighting among many environmental measures.

The 28 Metre Yacht – advanced design and engineering for advanced enjoyment.







# INTERIORS

SUNSEEKER 28 METRE YACHT





# GENERAL ARRANGEMENTS

SUNSEEKER 28 METRE YACHT

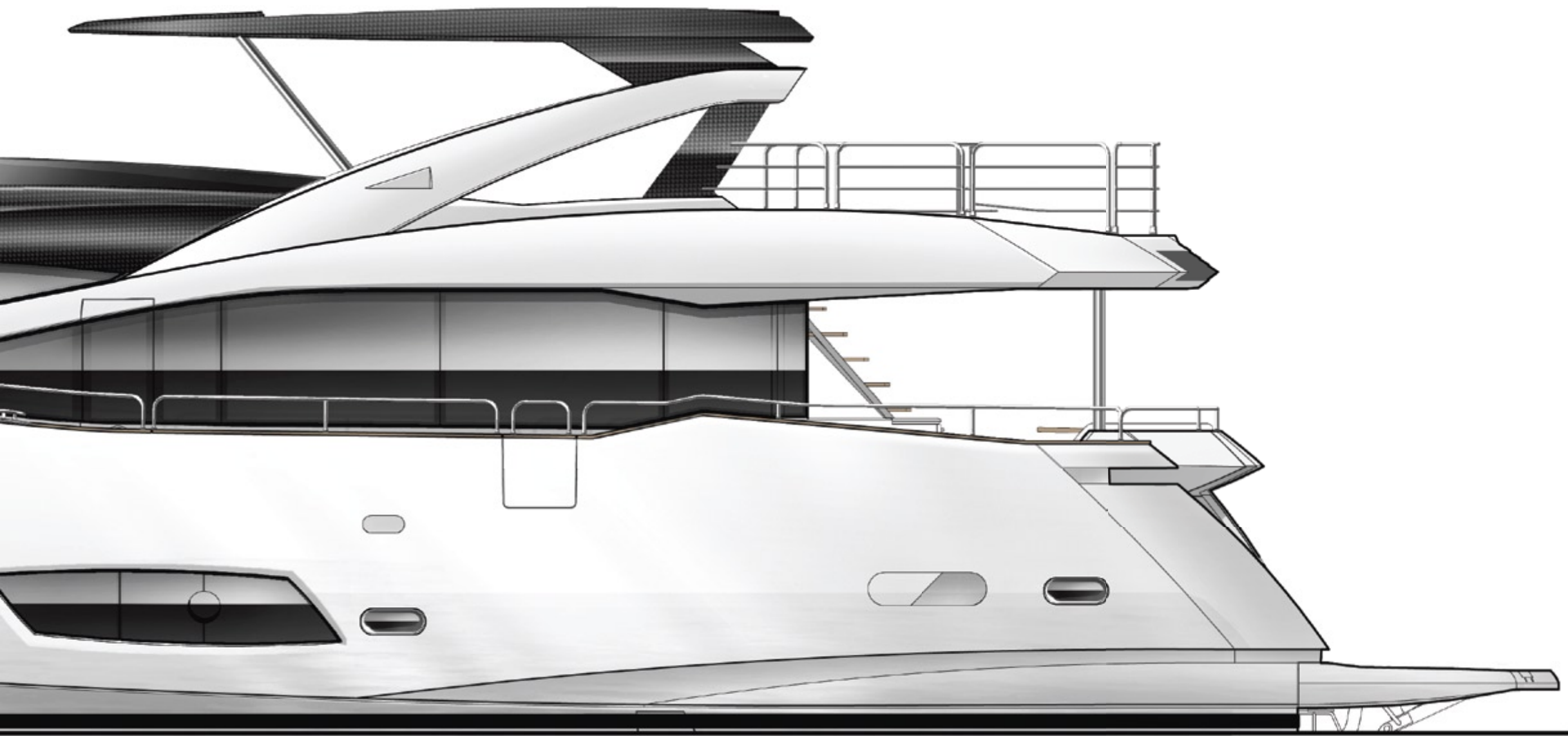


---

## Profile

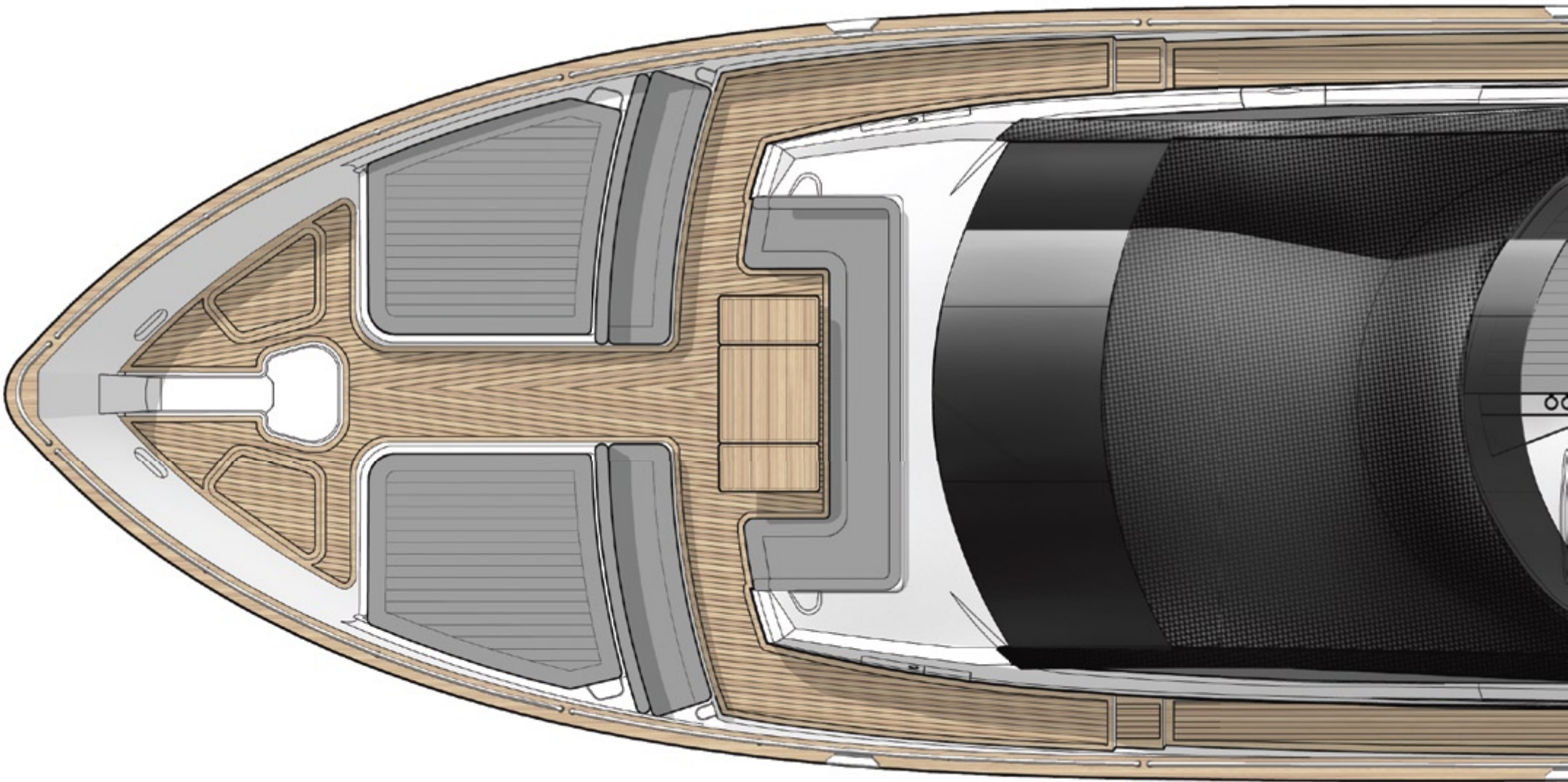
Shown with optional hard top

---



# GENERAL ARRANGEMENTS

SUNSEEKER 28 METRE YACHT

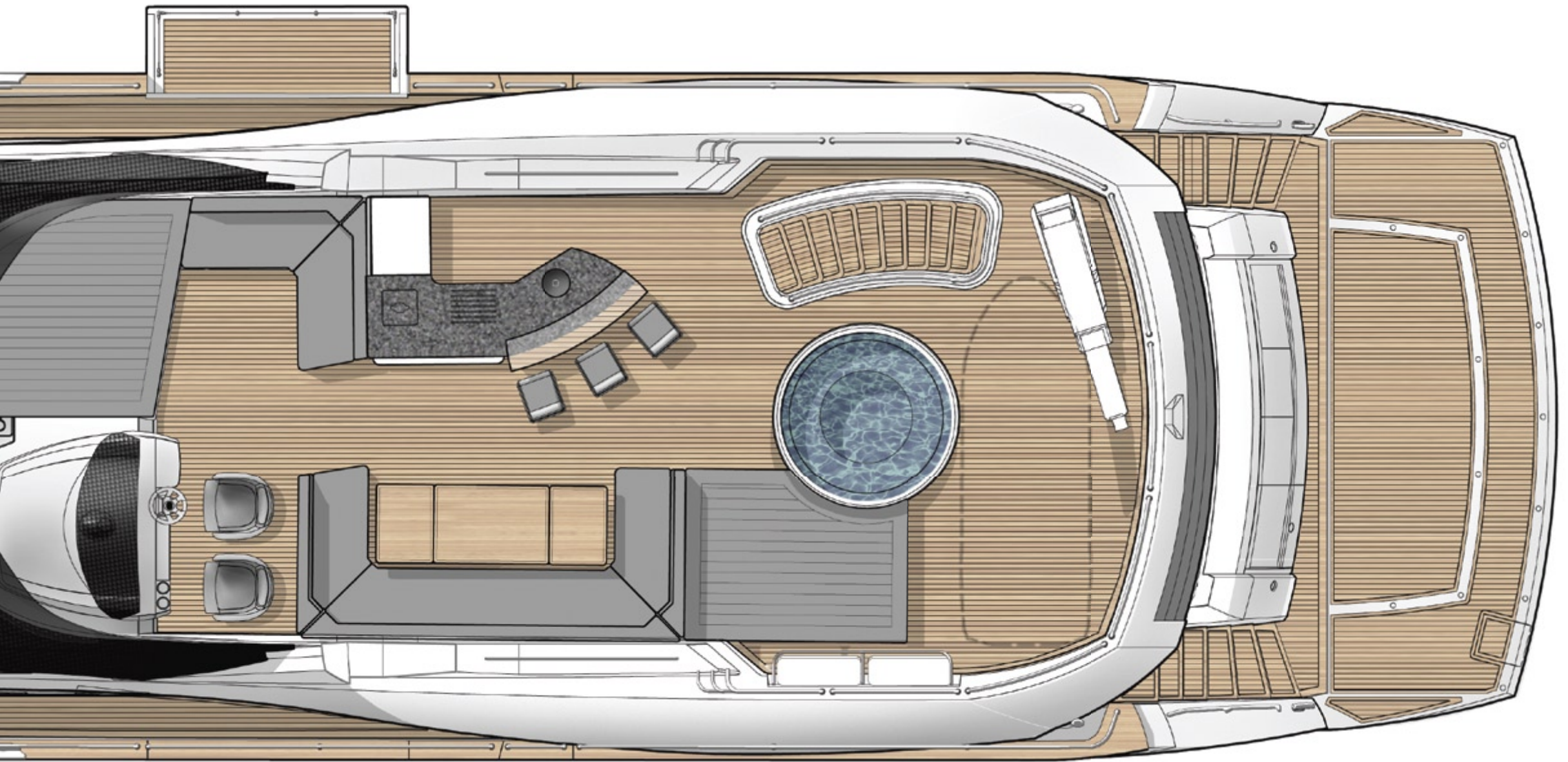


---

## **Flybridge**

Shown with optional bar stools, optional flybridge crane and optional spa tub with integrated sun pad

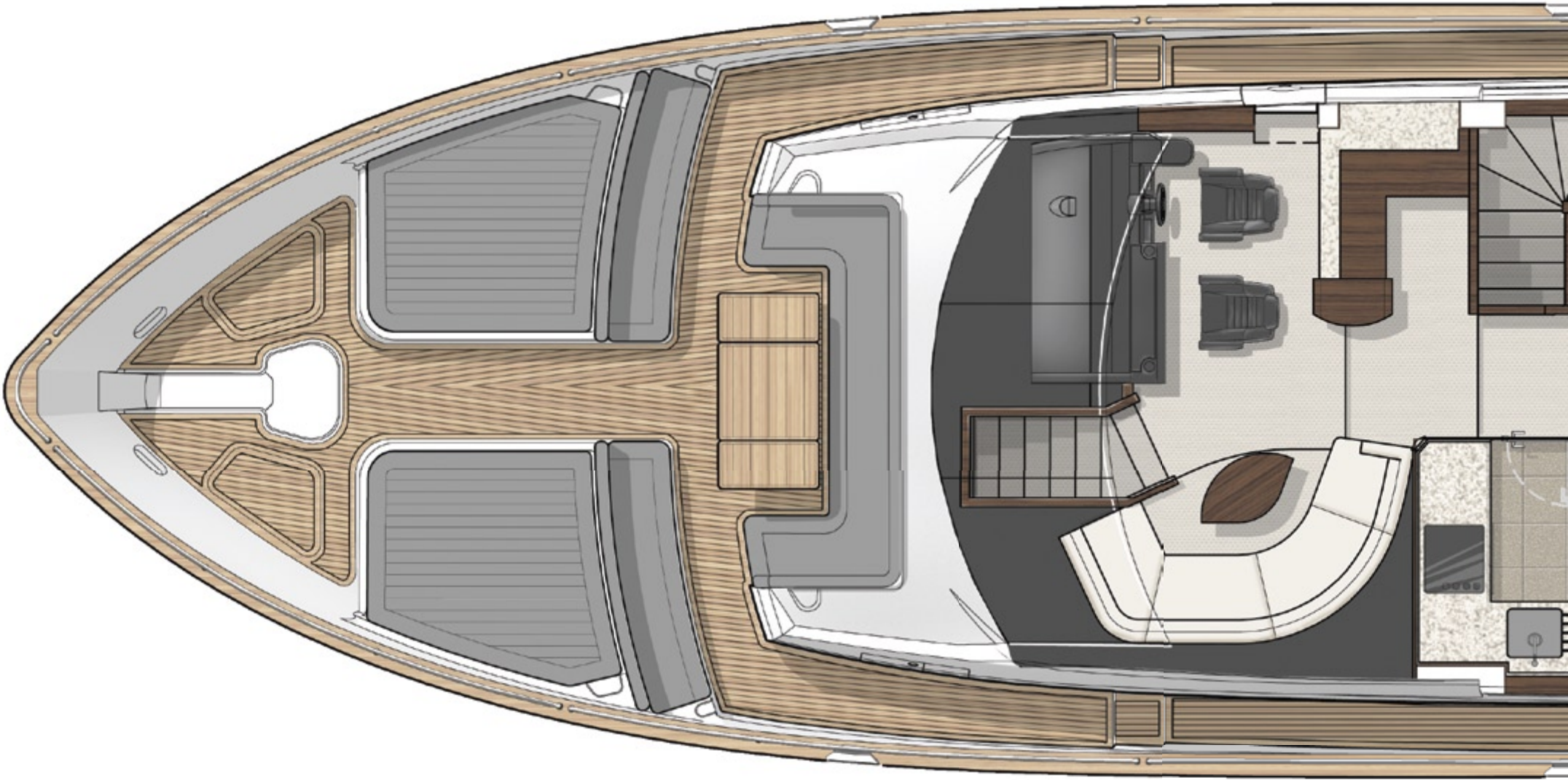
---





# GENERAL ARRANGEMENTS

SUNSEEKER 28 METRE YACHT

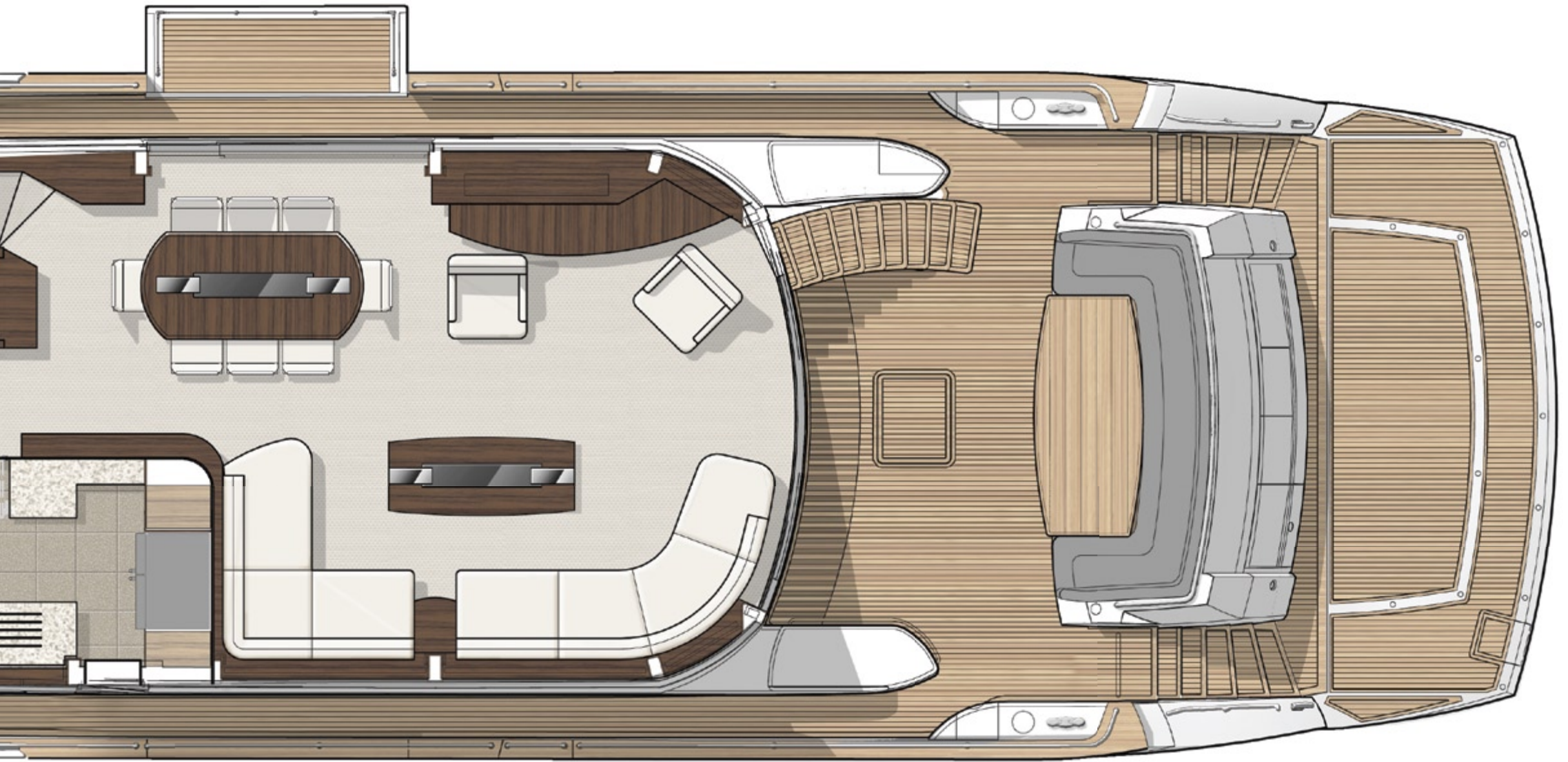


---

## Main deck

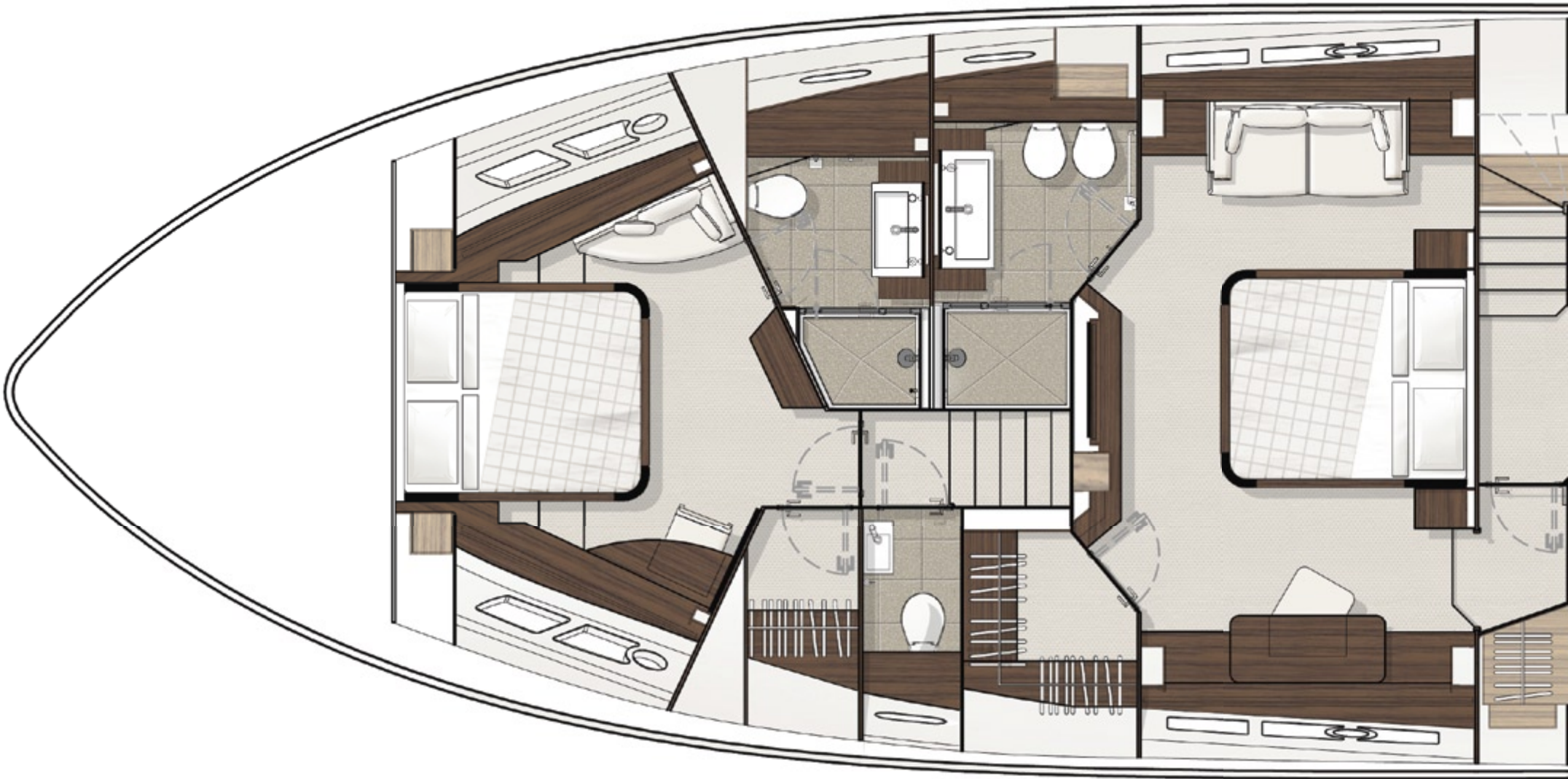
Shown with optional starboard saloon patio doors  
and optional bulwark balcony

---



# GENERAL ARRANGEMENTS

SUNSEEKER 28 METRE YACHT

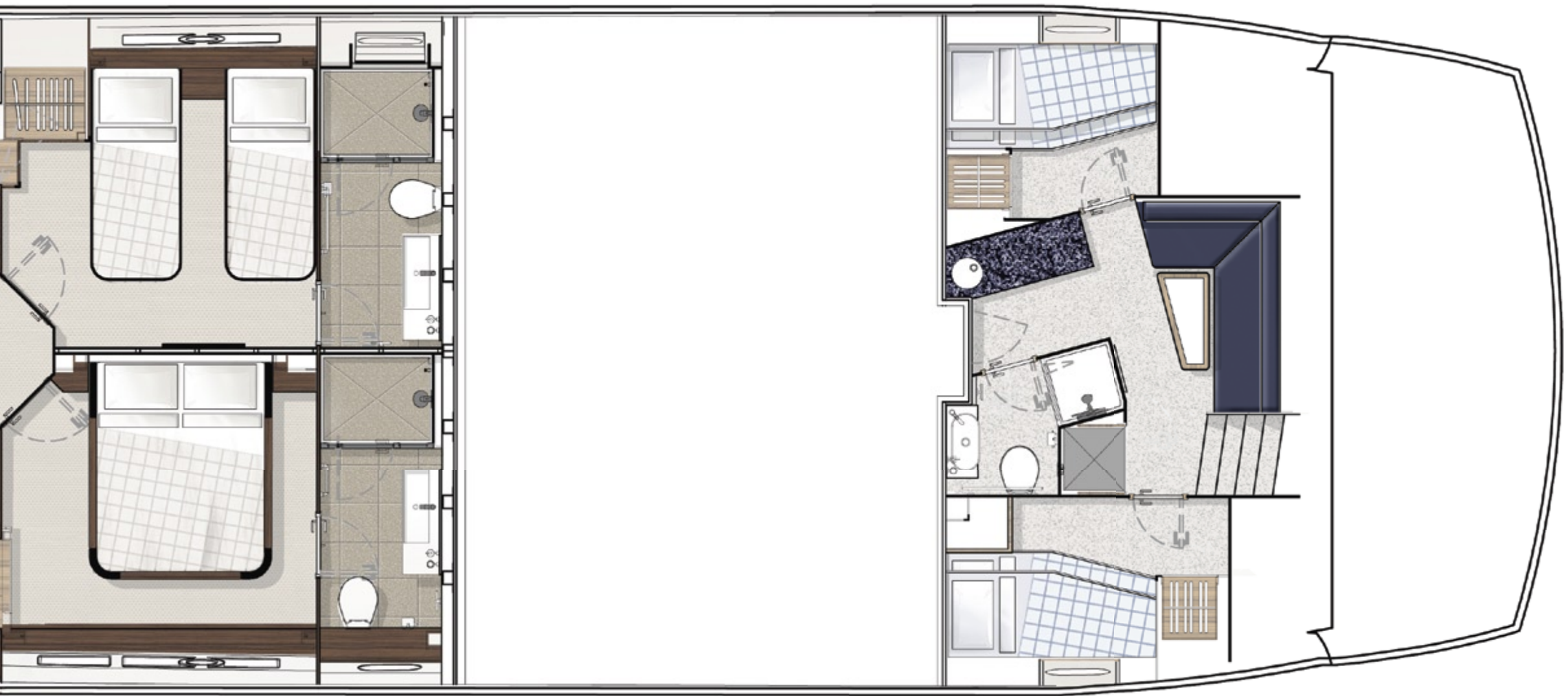


---

## Lower deck

Shown with optional dayhead and optional aft double cabin

---



# PRINCIPAL CHARACTERISTICS

SUNSEEKER 28 METRE YACHT

## PRINCIPAL CHARACTERISTICS (PROVISIONAL)

<b>Length overall – (incl. pulpit and platform)</b>	28.15m	92' 4"
<b>Beam – (maximum)</b>	6.54m	21' 6"
<b>Draft @ full load – (incl. props)</b>	2.13m	6' 11"
<b>Displacement – (@ normal half load)</b>	73,500kg	161,700lbs
<b>Fuel capacity</b>	9,000 litres	2,378 US gallons
<b>Fresh-water capacity</b>	1,500 litres	396 US gallons
<b>Black-water capacity</b>	435 litres	115 US gallons
<b>Propulsion</b>	Twin fixed-pitch submerged propellers in semi-recessed tunnels	
<b>Engine options</b>	up to 3900 PS (total)	
<b>Fuel options</b>	Diesel	
<b>Maximum speed</b>	up to 29 knots*	
<b>Cruising speed</b>	up to 23 knots*	
<b>Range</b>	up to 400 nautical miles*	

All principal characteristics and specifications are provisional and subject to final specification.

# PRINCIPAL FEATURES

SUNSEEKER 28 METRE YACHT

## PRINCIPAL FEATURES (PROVISIONAL)

---

Air conditioning

Hydraulic lifting platform

Electric winch and capstan at bow with foredeck controls

Manual side opening access doors

Hot and cold swimming shower at stern

Power-assisted steering

Uninterrupted power supply for AV equipment, lighting and air handlers

Flybridge wetbar with sink, ice maker, fridge and griddle

Flatscreen televisions and Blu-ray player in master stateroom and all guest cabins

Surround-sound system DVD/CD/radio in saloon

iPod docking station in saloon

Aft cockpit bar unit

Electric refrigerator/freezer with ice maker

Ceramic hob, microwave/oven and dishwasher

Electronic depth and speed displays

Radar/chart plotter with GPS

Autopilot

VHF radio with DSC

Hot and cold water system

Fresh water pump

Toilet system with holding tank

Automatic fire extinguishing system for engine room

Automatic bilge pumps

Slow speed generators with silent exhausts

Fire detection system

AC shorepower/battery charger

Bow thruster

Stern thruster

Trim tabs

Remote controlled spotlight at bow

Deck wash with outlets forward, aft and flybridge

Fresh water marina connection

Composite decking on the bathing platform and steps

Composite decking side decks

Composite decking flybridge and aft cockpit floor

Screen demisters

Stern winches

Antifouling

## STANDARD SPECIFICATION (PROVISIONAL)

**1 Construction**

Hand-laid GRP  
Gel coat including stripes  
Vinylester skin coat with powderbound mat  
Stitched multi-axial reinforced single skin bottom  
Balsa cored hull topsides  
PVC foam cored deck and superstructure  
Hull stiffened with longitudinal stringers supported by transverse bulkheads and floors

**2 Flybridge**

Self draining cockpit  
Acrylic deflecting spray screen  
Seating areas  
Storage lockers under seating  
Teak dining tables (natural finish) with stainless steel pedestal  
Upholstered sunbathing area forward  
Stainless steel aft safety rails  
Glass holders  
Wetbar unit  
Sink in wetbar unit  
Ice maker in wetbar unit  
Fridge in wetbar unit  
Ceramic electric griddle in wetbar unit  
Fire extinguisher in wetbar locker  
Deck wash outlet  
Low-level flybridge LED lighting (24v)  
Radar arch structure  
Radar chair with navigation light assembly  
Overhead LED lighting on underside of radar arch (24v)  
Two pairs marine speakers (connected to dedicated CD/radio in saloon)  
Composite decking  
Ensign staff and socket

**3 Flybridge helm**

Two helm seats  
Hydraulic steering  
Duplicate engine controls  
Analogue engine instrumentation  
Autopilot repeater  
Radar/chart plotter with GPS repeater  
Depth and speed multi display  
VHF second station  
Remote spotlight control  
Magnetic compass  
Steering indicator

Trim tab control  
Horn control  
Remote for CD/radio  
Waterproof plug and socket (12v)

**4 Deck**

Composite decking  
Fittings all in 316 stainless steel and chromed bronze  
Pair stainless steel bow mooring bollards and fairleads  
Stainless steel spring cleats  
Pair stern mooring bollards and fairleads  
Stainless steel pulpit and cockpit rails  
Stainless steel bow roller with anchor stop and devil's claw  
Single electric windlass 24v, starboard side, foredeck control only  
Anchor 100kg claw-type (galvanised)  
Anchor chain 138 metres/328 feet (12mm diameter, galvanised)  
Stainless steel bow plate  
Deck wash with outlets forward and aft  
Chain locker  
Curved direct glazed safety glass windscreen  
Pantograph windscreen wipers and washers  
Fresh-water filler  
Fuel fillers port and starboard  
IMCO navigation lights  
Remote controlled spotlight at bow  
Low-level courtesy LED lights on side decks (24v)  
U-shaped bow seat  
Twin bow sunbathing pads with storage underneath  
Bow teak table (natural finish) with adjustable pedestal  
Glass holders

**5 Aft cockpit**

Composite decking  
Self-draining  
Stairs to flybridge with composite decking treads  
Aft fixed U-shaped bench seating  
Teak table (natural finish) with folding leaves on stainless steel pedestal  
Stern safety gates  
Engine room access hatch  
2 x stern capstan winches (24v) and fairleads

Overhead cockpit LED lights (24v)  
Low-level courtesy LED lights (24v)  
Pair of marine speakers (connected to dedicated CD/radio in saloon)  
Remote for CD/radio  
Wetbar unit  
Sink in wetbar unit  
Ceramic electric griddle in wetbar unit  
Ice maker in wetbar unit  
Fire extinguisher in wetbar locker  
Cool box in wetbar unit  
Rubbish bin in wetbar unit

**6 Bathing platform**

Composite decked hydraulic lifting bathing platform (maximum lifting capacity 650kgs/1433lbs, maximum tender weight 550kgs/1212lbs)  
Stairs to aft cockpit with composite decking treads  
Stern spring cleats for stern-to mooring purposes  
Foldout stainless steel swimming ladder  
Hot and cold hand-held swimming shower  
Fresh-water marina connection  
Television and telephone marina connection  
Large transom storage lockers  
Access to crew quarters  
Dock side AC connection  
5m hydraulic telescopic passerelle

**7 Covers**

Windscreen sun screen  
Flybridge instrument cover  
Aft cockpit camper cover with windows

**8 Saloon and dining**

Stainless steel framed sliding patio door to aft cockpit  
Patio door curtains with tie back  
Sofa seating  
Coffee table  
Scatter cushions  
Flatscreen television (40") on rise and fall  
DVD/CD/radio surround sound system with five speakers and sub woofer  
iPod docking station connected to surround sound system  
Air conditioning  
Side windows with blinds

Drinks cabinet with glassware stowage for eight (8 x champagne, 8 x whisky, 1 x decanter)  
LED overhead lighting (24v)  
Double AC sockets  
Sensor connected to fire detection system  
Telephone point (aft starboard side)  
2 x table lamps  
Dining table  
8 x free standing dining chairs  
Storage cupboards  
Fitted carpet  
Access forward to main helm position  
Access to galley  
Stairs leading to master stateroom and two guest cabins

**9 Galley**

American style fridge/freezer with ice maker  
4-ring ceramic hob AC  
Hob extractor AC  
Slimline dishwasher AC  
Stainless steel sink  
Hot and cold water  
Rubbish bin  
Crockery set (8 place settings)  
Cutlery set (8 place settings)  
Side window with blind  
Storage consisting of cupboards, drawers and top-box lockers  
LED overhead lighting (24v)  
LED lighting under top box lockers (24v)  
Double AC sockets  
Sensor connected to fire detection system  
Air conditioning  
Fire blanket  
Fire extinguisher  
First aid kit  
Manual side opening door to port side deck  
Access to saloon area  
Microwave/Oven AC

**10 Main helm console and observation area**

2 x upholstered helm seats with electric operation  
Console with carbon fibre effect fascia  
Hydraulic power steering  
Steering wheel  
Radar/chart plotter with GPS

Autopilot  
Depth and speed displays  
VHF radio first station  
Magnetic compass  
Horn control  
Switch panels  
Remote spotlight control  
Trim tab controls  
Rudder indicator  
Digital engine instrumentation  
Fresh water gauge  
Fuel gauge  
Cigar lighter  
Main control and monitoring panel (AC/DC) with generators control  
Monitoring panel for fire detection system  
Windscreen wiper and washer controls  
Glass holder  
Screen demister  
Fire extinguisher  
Manual side opening door to starboard side deck  
Sofa seat with table on port side  
Air conditioning  
LED overhead lighting (24v)  
Fitted carpet  
Double AC sockets  
2 x telephone points  
Staircase forward leading to optional day head and forward VIP stateroom  
Chart stowage area

**11 Day head (optional)**

Toilet (24v)  
Granite floor  
Washbasin  
Tap and accessories (toilet roll holder, soap dispenser, towel ring)  
Mirror  
Extractor fan  
LED overhead lighting (24v)  
Side window with blind

**12 Forward VIP stateroom**

Stairs leading from main helm area  
Double berth  
Foam mattress for berth  
Storage beneath berth  
Drawers in berth end  
Bedside lights (24v)  
Dressing table  
Stool for dressing table  
Air conditioning

Flatscreen television (40") on bulkhead  
DVD/CD/radio surround system with two speakers and sub-woofer  
LED overhead lighting (24v)  
Organic panoramic window sets with round opening portlights with mosquito screens  
Escape hatch to foredeck companionway  
Double AC socket  
Fitted carpet  
Sensor connected to fire detection system  
2 x telephone points (port bedside and dressing table)  
Doors to en suite and walk-in wardrobe

**13 Forward VIP walk-in wardrobe**

Hanging rails  
Shelves  
Full-length mirror  
LED overhead lighting (24v)  
AC socket  
Fitted carpet  
Door to stateroom

**14 Forward VIP en suite**

Toilet (24v)  
Granite flooring  
Large washbasin  
Taps and accessories (toothbrush and glass holder, soap dispenser, towel rails and towels)  
Separate shower compartment  
Glass shower door  
Air conditioning outlet  
Extractor fan  
Shelved cupboard  
LED overhead lighting (24v)  
Opening porthole with mosquito screen and venetian blind  
Shaver socket 240/110v  
Door to stateroom

**15 Lower deck lobby**

Stairs leading down from main deck saloon area  
LED overhead lighting (24v)  
AC socket  
Fitted carpet  
Large bilge access hatch  
Sensor connected to fire detection system  
Doors leading to lower deck guest accommodation (excluding forward VIP stateroom)

### 16 Midships master stateroom

Double berth  
Foam mattress for berth  
Storage beneath berth  
Drawers in berth end and sides  
Bedside units with storage  
Bedside lights (24v)  
Dressing table  
Pouffe for dressing table  
Sofa  
Air conditioning  
LED overhead lighting (24v)  
Organic panoramic window sets with round opening portlights with mosquito screens  
Double AC sockets  
Sensor connected to fire detection system  
2 x telephone points (dressing table and starboard bedside table)  
Flatscreen television (40") on bulkhead  
DVD/CD/radio surround system with two speakers and sub-woofer  
Fitted carpet  
Doors to en suite and walk-in wardrobe

### 17 Midships master walk-in wardrobe

Hanging rails  
Drawers  
Shelves  
Full length mirror  
LED overhead lighting (24v)  
AC socket  
Fitted carpet  
Door to stateroom

### 18 Midships master en suite

Toilet (24v)  
Bidet  
Granite flooring  
Large washbasin  
Taps and accessories (toothbrush and glass holder, soap dispenser, towel rails and towels)  
Separate shower compartment  
Glass shower door  
Extractor fan  
Air conditioning outlet  
Mirror  
LED overhead lighting (24v)  
Opening porthole with mosquito screen and venetian blind  
Shaver socket 240/110v  
Door to stateroom

### 19 Aft starboard twin guest cabin

Twin berths  
Foam mattresses for berths  
Under berth stowage  
2 x reading lights (24v)  
Wardrobe  
Air conditioning  
LED overhead lighting (24v)  
Organic Panoramic window sets with round opening portlights with mosquito screens  
Double AC socket  
Sensor connected to fire detection system  
Flatscreen television (32")  
DVD/CD/radio surround system with two speakers and sub-woofer  
Telephone point  
Fitted carpet  
Doors to en suite and lobby

### 20 Aft starboard en suite

Toilet (24v)  
Granite flooring  
Washbasin  
Taps and accessories (toothbrush and glass holder, soap dispenser, towel rails and towels)  
Separate shower compartment  
Glass shower door  
Extractor fan  
Air conditioning outlet  
Vanity unit  
Shelved cupboard  
LED overhead lighting (24v)  
Opening porthole with mosquito screen  
Shaver socket (240/110v)  
Door to guest cabin

### 21 Aft port guest cabin

Two single berths  
Foam mattresses for berths  
Under berth stowage  
2 x reading lights (24v)  
Wardrobe  
Air conditioning  
LED overhead lighting (24v)  
Organic Panoramic window sets with round opening portlights with mosquito screens  
Double AC socket  
Sensor connected to fire detection system  
Flatscreen television (32")  
DVD/CD/radio surround system with two speakers and sub-woofer

Telephone point  
Fitted carpet  
Doors to en suite and lobby

### 22 Aft port en suite

Toilet (24v)  
Granite flooring  
Washbasin  
Taps and accessories (toothbrush and glass holder, soap dispenser, towel rails and towels)  
Separate shower compartment  
Glass shower door  
Extractor fan  
Air conditioning outlet  
Vanity unit  
Shelved cupboard  
LED overhead lighting (24v)  
Opening porthole with mosquito screen  
Shaver socket (240/110v)  
Door to guest cabin

### 23 Aft crew mess

Access door from stern  
Sink with tap  
Work top with under counter storage  
Air conditioning  
Small microwave  
Under counter fridge  
AC sockets  
Washer/dryer AC  
Telephone point  
Sensor connected to fire detection system  
LED overhead lighting (24v)  
Seating area  
Table  
Flatscreen television (22")  
DVD/CD/radio with two speakers  
Non slip safety flooring  
Doors to crew cabins and crew toilet/shower  
Watertight door to engine room

### 24 Port crew cabin

Twin fixed Pullman bunk berths  
Foam mattresses for berths  
Reading lights (24v)  
Air conditioning  
Wardrobe  
LED overhead lighting (24v)  
Double AC socket  
Telephone point  
Sensor connected to fire detection system

CD/radio with two speakers  
Fitted carpet  
Opening porthole with mosquito screen and curtains  
Door to crew mess

### 25 Starboard crew cabin

Twin fixed Pullman bunk berths  
Foam mattresses for berths  
Reading lights (24v)  
Air conditioning  
Wardrobe  
LED overhead lighting (24v)  
Double AC socket  
Telephone point  
Sensor connected to fire detection system  
CD/radio with two speakers  
Fitted carpet  
Opening porthole with mosquito screen and curtains  
Door to crew mess

### 26 Crew toilet and shower

Toilet (24v)  
Washbasin  
Shower cubicle  
Mirror  
Vanity unit  
LED overhead lighting (24v)  
Shaver socket (240/110v)  
Door to crew mess

### 27 Engine compartment and ancillaries

Soundproofing throughout  
Fuel filters/water separators to engines  
Fuel filters/water separators to generators  
Manual/automatic fire extinguishing system combined with engines, generators and fans shutdown  
Automatic bilge and flood pumps with high level alarms  
Air extraction fans AC  
Generator exhaust silencers and water separators  
Engine exhaust dry risers and water injection  
Strainers to all raw water inlets  
Sensor connected to fire detection system

### 28 Electrical system

2 x 25kW @ 50Hz slow speed generators with underwater silent exhaust and sound box  
Dock side AC connection  
Isolation transformer  
Semi-automatic AC power distribution 24v and 12v DC electrical system with full circuit breaker protection  
8 x starter batteries 24v circuit  
12 x domestic batteries 24v circuit  
Independent battery back up for VHF radio  
Automatic battery charge distribution  
Remote battery switches controlled from aft cockpit locker  
1 x 120 amp battery charger/inverter for 24v circuits  
1 x 200 amp battery charger/inverter for 24v circuits  
3 x 2kW immersion heaters for calorifier  
AC sockets throughout the boat  
Hand light and cable (24v)  
Class approved fire detection system with sensors in all cabins and monitoring beside main helm position

### 29 Underwater gear

NAB 5 blade propellers  
Bronze (AB2) P-brackets  
90mm Temet 25 propeller shafts  
Self aligning shaft seal with spare seal  
High-performance bronze rudders  
Valves to all underwater skin fittings  
Full cathodic bonding system to zinc anodes  
Stainless steel trim tabs  
Hydraulic bow thruster (30hp, sequential operation)  
Hydraulic stern thruster (30hp, sequential operation)  
Antifouling

### 30 Systems

Hydraulic power steering  
Electric toilet system with integral macerator (24v) with two-switch control  
Toilets discharging overboard or to black water tank  
Black water tank discharging to dock side or overboard  
Aluminium fresh water tank with electric sending unit  
Integral GRP fuel tank with electric sending unit  
Water pressure system (24v)  
Hot water tank, 200 litre (with 2 x 2kW immersion heaters)  
Hot water circulating pump AC  
Washbasins, showers and air conditioning fan coils to drain to grey water tank  
Grey water tank discharging overboard  
Chilled water air conditioning system (reverse cycle) AC  
Bilge pumping system (24v)  
Manual/automatic fire extinguishing system combined with engines, generators and fans shutdown  
Auxiliary hydraulics for trim tabs and platform (24v)

### 31 Miscellaneous

Retractable boat hook  
6 x docking lines (6 x 15 metre, 20mm diameter, black)  
1 x tender line (1 x 10 metre, 10mm diameter, black)  
8 x fenders (F7, 15" x 41", white)  
8 x fender ties (8 x 3.5 metre, 10mm diameter, black)  
Flagstaff with line  
Pennant mast with pennant flag  
Mosquito screens for openable portlights  
Vacuum cleaner  
Small toolkit  
12 x towel sets  
First aid kit  
Fire blanket  
Leather cleaning kit  
Lead lamp  
Deck wash fitting and hose reel  
Portable fire extinguishers





\*Every attempt has been made to give accurate information, but performance and range figures are estimates given as a guide only. Dirt or growth on the hull, tuning of the engines, size, make of engines fitted, damage to propellers, the temperature of the air and water, the weight of fuel, water, stores, number of people, propeller pitch, quality of fuel and other matters, can all affect a boat's performance and range. For these and other reasons we can give no performance, range or other guarantees, and neither such guarantees nor anything contained herein constitutes an offer of contract or any representation or agreement, or may otherwise be relied upon. The photographs and artist's impressions in this brochure are from existing models in the Sunseeker range. There may be items shown in these photographs and artist's impressions that are not included in the standard inventory of the models shown. Specifications contained in this brochure are provisional only and should not be relied upon and may refer to models only intended for sale in a particular territory and not generally. No guarantee is given that any model will be available in any territory; however by contacting us we can advise you of models that are likely to be available in each territory. In some examples herein we have referred to measurements, specifications or other details applicable to a particular territory and no guarantee is given that these are applicable to your territory. Actual specifications will be provided when a sales order or enquiry is placed with us or our approved Sunseeker distributor. Specifications for models sold in different markets may vary and specifications and models may be changed or withdrawn at any time without prior notice. The individual specification for each vessel will be agreed as part of the sale contract between the purchaser and the Sunseeker distributor. Distributors are independently owned and operated entities, and therefore Sunseeker distributors are not owned by Sunseeker International Limited or any subsidiaries or other related entity of this company nor are they their agents. Therefore they have absolutely no authority to commit Sunseeker International Limited, or any subsidiary or other related entities of Sunseeker International Limited to any pledge, contract or agreement in any form or by any means unless first accepted in writing by Sunseeker International Limited. For ease of reference we have, in some cases, referred to "we" or "Sunseeker" and these terms should be taken to mean Sunseeker International Limited.

Designed, written and produced by Marketing Matters Limited. Printed in the EU. September 2011. ©Sunseeker International.

